

SURVEY SYSTEMS



REMOVABLE CONTAMINATION SMEARS

1 3/4" dia. cloth smears
premounted on folders. Box
of 250.

Weekly Price: \$ Price/4
Weeks: \$50



LUDLUM 4260-233 LEAD COLLIMATOR

1/2" thick lead shield used
with Ludlum Model 44-10 for
high sensitivity gamma
survey.

Weekly Price: \$100 Price/4
Weeks: \$300



HAND AUGER

Soil Sampling Auger
3" diameter auger with 3'
extension and hand grip.

Weekly Price: \$100 Price/4
Weeks: \$250



47MM PLANCHETTS

47mm aluminum planchetts.
Package of 100.



Weekly Price: \$- Price/4
Weeks: \$50



37MM AIR FILTER CARTRIDGE

Plastic cartridge to hold
37mm air filter. Package of
10.

Weekly Price: \$- Price/4
Weeks: \$50



47MM AIR FILTER

Gelman Type A/E 47mm
Glass Fiber Filter. Box of 100.

Weekly Price: \$- Price/4
Weeks: \$50



37MM AIR FILTER

Gelman Type A/E 37mm
Glass Fiber Filter. Box of 100.

Weekly Price: \$- Price/4
Weeks: \$50



HI-Q CF-973

High-Volume Portable Air
Sampler

Hi-Q CF-973 is a high volume
portable air sampler. Flow
Range: 10-50 CFM. Includes
4 inch Dia. filter paper only
holder which accepts the CF
series 8 inch x 10 inch
holder.

Weekly Price: \$100 Price/4
Weeks: \$160



FANDJ MODEL LV-1

Low Volume Air Sampler

FandJ Model LV-1 is a low volume portable air sampler designed for continuous indoor use but can be used outdoors if protected from the elements. Flow range is 10 -100LPM. Unit comes with a 47mm filter holder.

Weekly Price: \$100 Price/4 Weeks: \$125



MINIBUCK M-5 PRIMARY FLOW LAPEL CALIBRATOR

NIST traceable digital calibrator for MSA Escort ELF Air Sampler.

Weekly Price: \$120 Price/4 Weeks: \$200



MSA ESCORT ELF AIR SAMPLER

Lapel Air Sampler

For personal air sampling. Sampling rate of up to 3 liters per minute. Includes charger, and 37 mm filter holder. Cyclone particle separator available.

Weekly Price: \$120 Price/4 Weeks: \$200



MIE PERSONAL DATARAM PDR-1000AN

Aerosol Monitor

Hand-Held and fixed-point, real-time aerosol monitor and data logger.

Weekly Price: \$225 Price/4 Weeks: \$575



ALPHA SPECTRA FIDLER

Low Energy Photon Probe

Beryllium window thin NaI scintillator for the detection of low energy photons.
(F)ield (I)nstrument for (D)etecting (L)ow (E)nergy (R)adiation.

Weekly Price: \$200 Price/4 Weeks: \$600



EBERLINE HP210L

Shielded Pancake G-M Probe.

Lead shielded G-M tube (15 cm² active area) used for alpha, beta-gamma survey. For use in high gamma shine areas.

Weekly Price: \$35 Price/4 Weeks: \$50



LUDLUM 182

Radon Flask Counter

Lucas Cell Counting

Weekly Price: \$100 Price/4 Weeks: \$200



LUDLUM 44-116

Beta Probe

Plastic beta scintillator (126 cm² active area) used for surface contamination monitoring.

Weekly Price: \$75 Price/4 Weeks: \$95



LUDLUM 43-90

Alpha Probe

ZnS alpha scintillator (126 cm² active area) used for surface contamination monitoring.

Weekly Price: \$75 Price/4
Weeks: \$90



LUDLUM 43-89

Alpha/Beta Phoswich Probe

ZnS alpha scintillator with thick plastic beta scintillation material (126 cm² active area) used for surface contamination monitoring.

Weekly Price: \$75 Price/4
Weeks: \$125



LUDLUM 43-37

Large Area Alpha/Beta Gas Proportional Probe

Large area gas proportional (582 cm² active area) used for surface contamination monitoring. Must be charged with P-10 counting gas.

Weekly Price: \$40 Price/4
Weeks: \$125



LUDLUM 44-62

Gamma Probe

NaI 0.5" diameter x 1" thick scintillator used for wide-energy gamma detection.

Weekly Price: \$30 Price/4
Weeks: \$75



LUDLUM 44-40

Shielded Pancake G-M Probe

Lead shielded G-M tube (15 cm² active area) used for alpha, beta-gamma survey. For use in high gamma shine areas.

Weekly Price: \$15 Price/4
Weeks: \$35



LUDLUM 44-20

Gamma Probe

Nal 3"x3" probe with gamma scintillator used for high energy gamma surveys. High sensitivity gamma survey when used with polyshield as collimator.

Weekly Price: \$250 Price/4
Weeks: \$450



LUDLUM 44-17

Low Energy Gamma Probe

2" x 2mm Nal gamma scintillator probe for low energy gamma (I-125) and X-ray surveys.

Weekly Price: \$40 Price/4
Weeks: \$100



LUDLUM 44-10

Low Energy Gamma Probe

Nal 2"x2" probe with gamma scintillator used for high energy gamma surveys. High sensitivity gamma survey when used with polyshield as collimator.

Weekly Price: \$40 Price/4
Weeks: \$100



LUDLUM 44-9

Pancake G-M Probe

Aluminum housed G-M tube (15 cm² active area) used for alpha, beta/gamma survey.

Weekly Price: \$12 Price/4
Weeks: \$30



LUDLUM 44-3

Low Energy Gamma Probe

1"x1mm NaI gamma scintillator probe for low energy gamma (I-125) and X-ray surveys.

Weekly Price: \$40 Price/4
Weeks: \$75



LUDLUM MODEL 44-1

Beta Probe Scintillator (11.6 cm² open and active area) used for beta detection.

Weekly Price: \$40 Price/4
Weeks: \$75



LUDLUM 44-94

Alpha/Beta/Gamma Detector

4 GM pancake detector.

Weekly Price: \$50 Price/4
Weeks: \$100



LUDLUM 43-93

Alpha/Beta Phoswich Probe

ZnS alpha scintillator with thick plastic beta scintillation material (100 cm² active area) used for surface contamination monitoring.

Weekly Price: \$40 Price/4 Weeks: \$100



LUDLUM 43-68

Alpha/Beta Gas Proportional Probe

Gas proportional (126 cm² active area) used for surface contamination monitoring. Must be charged with P-10 counting gas.

Weekly Price: \$20 Price/4 Weeks: \$50



LUDLUM 239-1F

Floor Monitor Cart, Gas Proportional Probe, and Ludlum 2221 or 2360 Detector

Gas proportional (582cm² active area) used for floor / surface contamination monitoring. Must be charged with P-10 counting gas. The price includes cart, meter, probe and regulator. User must provide P-10 gas cylinder.

Weekly Price: \$225 Price/4 Weeks: \$475



LUDLUM 43-5

Alpha Probe

ZnS alpha scintillator (76 cm² active area) used for surface contamination monitoring.

Weekly Price: \$25 Price/4 Weeks: \$60



LUDLUM 2929 W/ 43-10-1

Alpha/Beta Scaler +
Phoswich Tray Counter

Scaler paired with alpha/beta tray counter. Separate LED for both alpha and beta channels.

Weekly Price: \$95 Price/4 Weeks: \$240



GE ENERGY MODEL RSDTECTION

High Pressure Ion Chamber

Pressurized Ion Chamber - For precise exposure unit measurements. Results in Roentgen/hour (R/hr). NOTE - DOT TRAINING IS REQUIRED FOR ANY PERSONNEL SHIPPING THE HPIC.

Weekly Price: \$1,000 Price/4 Weeks: \$2,500



LUDLUM 19

Micro-R Survey Meter

Gamma-ray exposure rates. (0 - 5mR/hr)

Weekly Price: \$40 Price/4 Weeks: \$100



MICRO REM /SIEVERT TISSUE EQUIVALENT SURVEY METERS

Tissue Equivalent Exposure Meter

These instruments give tissue-equivalent photon response for X-ray and gamma radiation from environmental levels of 0 to 20 urem/h (0 to 0.2 uSv/h) full scale up to normal survey levels of 200 mrem/h (2 mSv/h) full scale.

Weekly Price: \$100 Price/4 Weeks: \$250

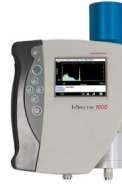


ORTEC DIGIBASE

Multi-Channel Analyzer (Field portable)

The digiBASE is a 14 pin photomultiplier tube base for gamma ray spectroscopy applications with NaI(Tl) scintillation detectors. The unique concept of the digiBASE combines a miniaturized preamplifier and detector high voltage (0 to 1200 V bias) with powerful digital signal processing, multichannel analyzer, and special features for fine time resolution measurements.

Weekly Price: \$400 Price/4 Weeks: \$950



INSPECTOR 1000

Multi-Channel Analyzer (Field portable)

The InSpector 1000 analyzer is a high-performance, handheld NaI spectrometer for use primarily in first responder, customs, homeland security, and health-physics applications.

Weekly Price: \$400 Price/4 Weeks: \$950



EG&G ORTEC MCA

Multi-Channel Analyzer (Field portable)

Micro NOMAD or DigiDART field portable gamma-ray MCA with NaI 2"x2" or 3"x3" detector and appropriate EGandG ORTEC software.

Weekly Price: \$150 Price/4 Weeks: \$300

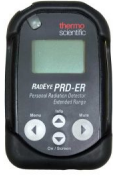


ORTEC HIGH-PURITY GERMANIUM (HPGE) GAMMA SPECTROMETER

Germanium Detector

System consists of everything: Ortec 40+% efficiency detector, Ortec X-Cooler II Mechanical Cooler with cold head assembly (no need for liquid nitrogen), DigiDART MCA, Desktop computer with GammaVision-32 application and an ERG system housing with lead shield. Call to discuss weekly price.

Weekly Price: \$ Price/4 Weeks: \$4,000



THERMO RADEYE PRD

Personal Radiation Monitor

Achieve highly sensitive radiation detection with few nuisance alarms with Thermo Scientific RadEye PRD4 and PRD-ER4 Personal Radiation Detectors. RadEye PRD4 and PRD-ER4 save users valuable time adjudicating alarms while increasing scanning throughput. Using Natural Background Rejection (NBR) Technology, the RadEye PRD4 and PRD-ER4 ignore fluctuations in naturally occurring radiation (NORM) while analyzing the energy imbalance of artificial radiation. Additionally, these radiation detectors identify the discovered material in a manner configurable for your operation or user skills.

Weekly Price: \$125 Price/4
Weeks: \$300



LUDLUM 3000

Digital Scaler/Ratemeter

General survey meter used with probes to measure rates/counts. Adjustable count time, HV, and window. Single Channel Analyzer. Bluetooth Equipped.

Weekly Price: \$75 Price/4
Weeks: \$190



LUDLUM 9

Ion Chamber

General purpose survey meter. Exposure rate measurements. (0 - 5000 mR/hr)

Weekly Price: \$75 Price/4
Weeks: \$125



LUDLUM 3 W/ 44-2

micro-R Survey Meter NORM
Meter

Ratemeter with NaI 1"x1" probe. Used for gamma ray exposure rates. Often referred to as a NORM meter. (Calibrated to Cs-137)

Weekly Price: \$45 Price/4
Weeks: \$115



LUDLUM 2929 W/ 43-10-1

Alpha/Beta Scaler +
Phoswich Tray Counter

Scaler paired with alpha/beta tray counter. Separate LED for both alpha and beta channels.

Weekly Price: \$95 Price/4
Weeks: \$240



LUDLUM MODEL 2360

Digital Alpha/Beta Data
Logger

Discriminates between alpha and beta when used with phoswich detector. Typically set up with proportional or phoswich detector. Capable of logging up to 550 individual data points.

Weekly Price: \$55 Price/4
Weeks: \$140



LUDLUM 2241

Digital Scaler/Ratemeter

General survey meter used with probes to measure rates/counts.

Weekly Price: \$40 Price/4
Weeks: \$100



LUDLUM 2221

Digital Scaler/Ratemeter

General survey meter used with probes to measure rates/counts. Adjustable count time, HV, and window. Single Channel Analyzer. RS-232 option upon request.

Weekly Price: \$75 Price/4
Weeks: \$190



LUDLUM 177

Alarm Ratemeter

Used with GM detector or alpha probe at frisking station.

Weekly Price: \$30 Price/4 Weeks: \$75



LUDLUM 19

Micro-R Survey Meter

Gamma-ray exposure rates. (0 - 5mR/hr)

Weekly Price: \$40 Price/4 Weeks: \$100



LUDLUM 12

Ratemeter

General survey meter used with probes to measure rates/counts. Adjustable HV and threshold.

Weekly Price: \$30 Price/4 Weeks: \$75



MICRO REM /SIEVERT TISSUE EQUIVALENT SURVEY METERS

Tissue Equivalent Exposure Meter

These instruments give tissue-equivalent photon response for X-ray and gamma radiation from environmental levels of 0 to 20 urem/h (0 to 0.2 uSv/h) full scale up to normal survey levels of 200 mrem/h (2 mSv/h) full scale.

Weekly Price: \$100 Price/4 Weeks: \$250



TC-99 SOURCE

Electroplated Source
Exempt quantity as defined
in Title 49 CFR 170.436
(DOT)

Weekly Price: \$50 Price/4
Weeks: \$100



CS-137 SOURCE

Button Source
Limited quantity as defined
in Title 49 CFR 170.436
(DOT)

Weekly Price: \$50 Price/4
Weeks: \$100



EBERLINE SR/Y-90 SOURCE

Electroplated Source
Exempt quantity as defined
in Title 49 CFR 170.436
(DOT)

Weekly Price: \$50 Price/4
Weeks: \$100



PO-210 SOURCE

Wall Source
Exempt quantity as defined
in Title 49 CFR 170.436
(DOT).

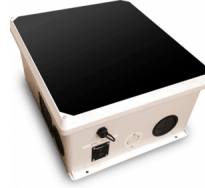
Weekly Price: \$100 Price/4
Weeks: \$250



RIGS

ERG is now pleased to offer the same capability indoors where GPS is limited or not available. The system utilizes a single advanced scanning laser to continuously map the room and determine the position of up to three detectors simultaneously.

Weekly Price: \$1,050
Price/4 Weeks: \$4,200



MODEL 104G GPS ARRAY SYSTEM

High Density GPS Survey System

The ERG 104G utilizes a Ludlum 4612, a common GPS receiver, and an IMU to obtain gamma measurements with extremely high accuracy positions from up to 12 detectors simultaneously. The system comes with an interface box, and a tablet or laptop for data collection. Rental price also includes all analysis software necessary to generate shapefile (or similar) survey files. Weekly and monthly pricing do not include radiation detectors or cart/UTV. Please use pricing for detectors from the ERG Equipment Rental webpage, and call for cart/UTV pricing options.

Weekly Price: \$2,500
Price/4 Weeks: \$5,700



MODEL 102F FLOOR SCANNER

Indoor Survey System

The ERG Model 102F is our most advanced indoor surveying system. The system, built on the functionality of the Ludlum 239-1F, features a six zone Zinc Sulfide plastic scintillator detector, stand-alone indoor positioning system (no external beacons) with less than two inch accuracy, a motor driven axle for maintaining speed, and all the necessary software to perform calculations and export data to Shapefile (.shp), Excel, or raw text. Laptop is included in rental price.

Weekly Price: \$1,300 Price/4 Weeks: \$5,200



RADSCOUT GPS GAMMA SYSTEM

GPS Survey System

The ERG RadScout is our most advanced Handheld GPS gamma survey system. The system comes with a touch enabled data logger, sub-meter GPS receiver, our bluetooth 2221, backpack, and all associated cables and charging electronics. The system comes with all necessary software to view real-time data in the field, export field data to removable drive (included), and export all data to shapefile format.

ERG RadScout with 44-10

Weekly Price: \$565 Price/4 Weeks: \$2,090

ERG RadScout with 44-20

Weekly Price: \$775 Price/4 Weeks: \$2,440

ERG RadScout with FIDLER

Weekly Price: \$725 Price/4 Weeks: \$2,590

Trimble Pro XRT, XH or ERG RadScout

Weekly Price: \$450 Price/4 Weeks: \$1,800

